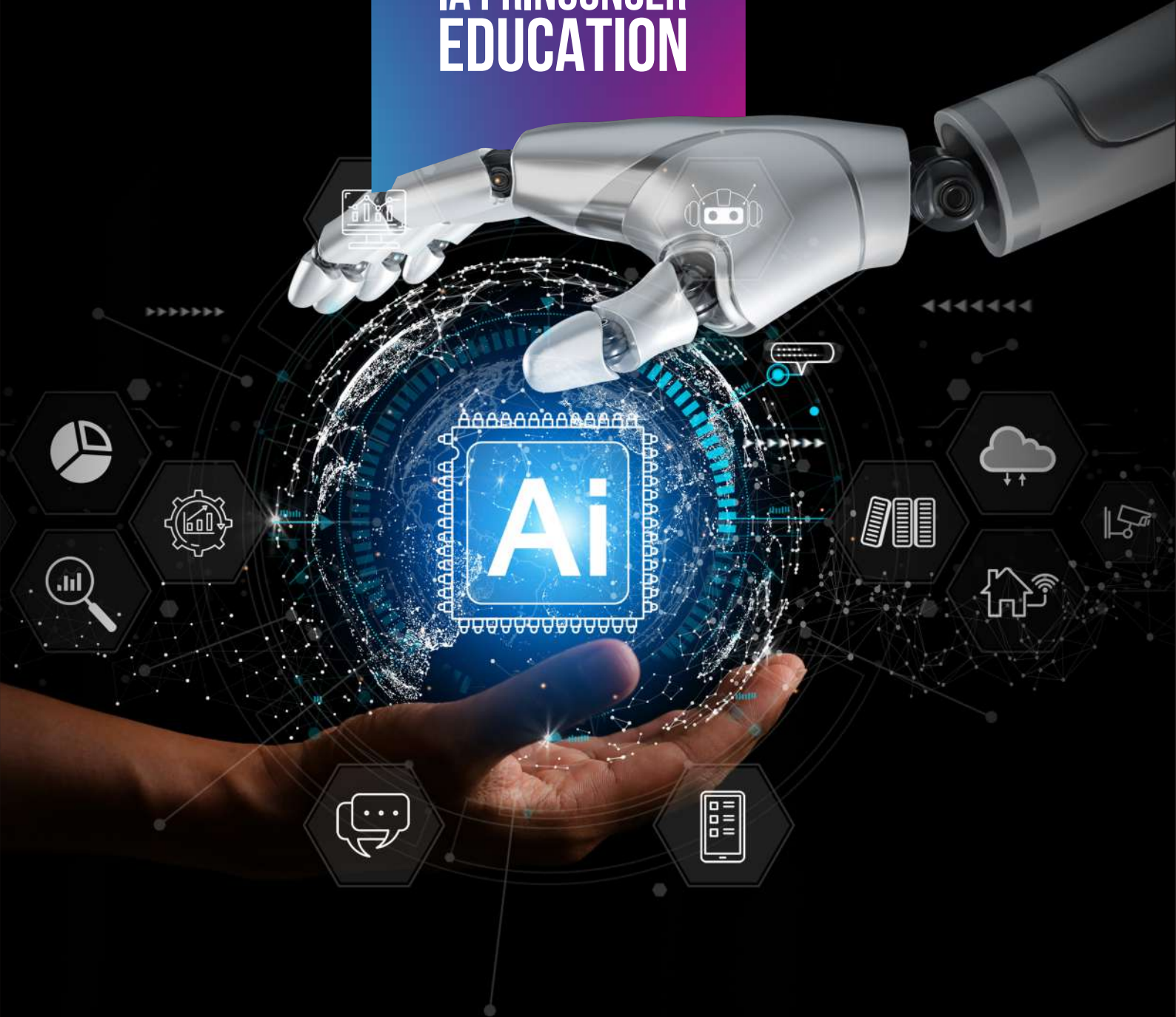




**IA PRINCONSER
EDUCATION**



“for transformative Educators”

CLICK HERE:

<https://bit.ly/45kl3VP>

WHAT IS PRINCONSER AI FOR EDUCATION?

It is an educational artificial intelligence based on the **PRINCONSER Method**, guiding educators through 9 modules of universal wisdom to transform their teaching practice. It provides philosophical, diagnostic, methodological, curricular, and practical guidance to form human beings with universal awareness.

WHO IS IT FOR?

- Teachers in early childhood, primary, secondary, and higher education
- School principals and educational advisors
- Teacher trainers and facilitators
- Education and pedagogy students
- Researchers interested in educational innovation

WHAT CAN THIS AI DO FOR YOU AS A TEACHER?

- Answer questions about the foundations of the Princonser Method
- Diagnose your teaching practice from a universal perspective
- Propose curricular strategies based on universal laws
- Help you shift from teacher to wisdom guide
- Accompany you in classroom and institutional application
- Suggest evaluation, integration, and learning projection methods



CONTENT BY MODULE

Module	Main Content
Module 1	Origin, philosophy, and purpose of universal education
Module 2	Diagnosis of the current educational system
Module 3	How Princonser AI works in education
Module 4	Transformation of the teacher
Module 5	Application of universal foundations in education
Module 6	Curriculum design with the Princonser method
Module 7	Evaluation and impact with universal wisdom
Module 8	Implementation strategy
Module 9	(Complementary) Logical foundation of AI and methodological reflection

HOW TO INTERACT WITH THE AI?

1. Start the conversation by greeting or asking a question, for example:

- "What is the Principle of Conservation in education?"
- "How do I design a class with universal wisdom?"
- "Help me reformulate my assessment using Module 7"
- "I'm a high school teacher, how can I transform my role?"

2. Ask for step-by-step guidance

- You can say: "Summarize Module 4 for me" or "Give me an example of planning using Module 6."

3. Use any language

- The AI responds automatically in Spanish, English, or other languages.

RECOMMENDATIONS FOR THE TEACHER

- Use this tool as both a reflective and practical guide, not just as a search engine.
- Share your progress with colleagues and foster universal pedagogical dialogue.
- Integrate what you learn into your lesson plans and school projects.
- For deeper insights, ask for step-by-step argumentation.

WHAT DO I NEED TO USE IT?

- An updated web browser (Chrome, Firefox, etc.)
- Access to the AI via link (Customized ChatGPT or other platform)
- A desire to learn, transform, and educate with wisdom

WANT MORE IN-DEPTH TRAINING?

You can request:

- On-site or virtual workshops
- Certification in "Educator with Universal Wisdom – Princonser Method"
- Personalized pedagogical assistance from our Princonser AI Education

CLICK HERE:

<https://bit.ly/45kl3VP>



PRINCONSER
SINCE UNIVERSITY 2023

REQUEST MORE INFORMATION AT



+511 4801749



info@princonser.edu.pe



www.princonser.edu.pe



**Edificio Schreiber Business Center.
German Schreiber 276 San Isidro, Lima - Perú**